

sage Inventory Advisor Basics

Intelligently manage inventory levels

Easily identify what to buy and when, so you minimize stock-outs and excess inventory.



Improve profitability

Reduce stock-outs and excess inventory, so you can optimize your working capital.

Save time

Improve forecasting visibility and make better planning and purchasing decisions.

Delight your customers

Ensure you have the right products on hand to sell when you need them.

Simplify the management of your inventory and optimize stock levels

Designed for small and medium-sized distributors and retailers who use Sage 100c or Sage 300c, Sage Inventory Advisor Basics helps you reduce time spent on manual calculations so you can better prioritize inventory decisions and improve fill rates. You'll never have to use a spreadsheet to manage inventory levels again. With Sage Inventory Advisor Basics, you'll have a simplified and easy-to-use inventory planning tool that supports businesses with independent warehouses or single warehouse planning needs.

Make smarter purchasing decisions

Sage Inventory Advisor Basics helps you understand what orders need to be placed and when. Using a graphical dashboard, you'll be able to see critical information such as stock-outs, potential stock-outs, where you have excess stock, and more. Sage Inventory Advisor Basics also helps

you manage minimum order quantities and safety stock levels so you can rest assured you get maximum value out of your orders every time.

Order schedule							
Product code, Description, Class, Velocity	Order			Value	Policy	Der	
	UOM, EAD	Rec, Amended	Cost, Amended				
BQ1242FGN07 Axle Assy 20" 10-stud 335 73" Track APxxxx2 K Standard Stocked out	units May 09, 2016	105 105	1,119.0339 1,119.0339	117,499	200 Up to RDP	100 Avg 12 sales: 5.2 PTD sales: 10 Age	
BQ1248FG71SN07 Axle Assy 20" 5-spoke 71.5" Track Maxus APxxxx2 K Standard Potential s/o	units May 09, 2016	27 27	1,132.5633 1,132.5633	30,579	50 Up to RDP	25 Avg 12 sales: 4 PTD sales: 3 Age	
BQ1246FGN07 Axle Assy 20" 5-spoke Grease Complete APxxxx2 K Standard Stocked out	units May 09, 2016	130 130	1,135.1267 1,135.1267	147,566	250 Up to RDP	200 Avg 12 sales: 45 PTD sales: 13 Age	

Download Archive Add

Created by SIA Basics User
Created on February 09, 2016
Location ABC Warehouse
Supplier FLWA K HITCH - OVERSEAS AUDS

Line count	Recommended	Am
3		
Order units	282	
Order value	295,644	

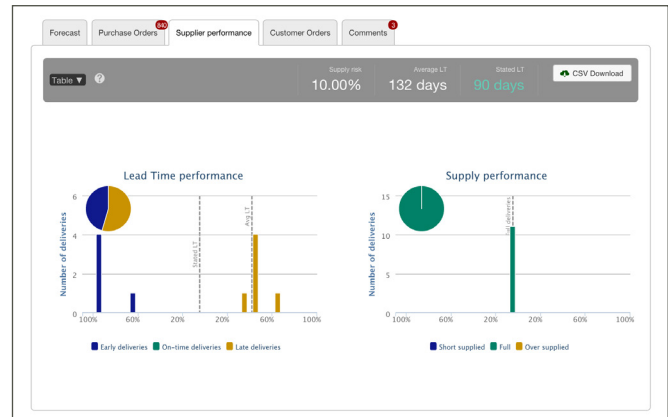
Click here to get help

With Sage Inventory Advisor Basics you can easily see inventory details including the recommended quantity to order.

sage Inventory Advisor Basics

Reduce stock-outs and excess stock

Manual calculations are time consuming and prone to error—and become more difficult to manage as your stock numbers grow. With greater visibility into stock metrics across SKUs and accurately generated forecasts, you can make better decisions about your inventory. Identify important items at a glance, use automated calculations, and benefit from expected stock reductions and improved fill rates of up to 10%.



Keep tabs on your supplier's delivery performance with easy-to-view graphical charts.

Extend the inventory capabilities of Sage 100c and 300c

Sage 100c and Sage 300c creates and monitors inventory transactions.	Sage Inventory Advisor Basics analyzes your inventory transactions and recommends the next best decisions.
Creates purchase orders and reports on purchase status.	Forecasts stock demands using sales data.
Tracks receiving stock.	Rapidly identifies what to order and how much.
Counts physical stock.	Identifies when to expedite orders on suppliers to prevent stock-outs.
Tracks picks, packs, and shipments to customers.	Recommends what inventory to reduce.

Implement and use with ease

Sage Inventory Advisor Basics is a cloud solution, so you never have to coordinate software updates or manage your own server. It automatically connects to Sage 100c or Sage 300c data and uses a familiar browser-based interface. Your data is available to you anytime, anywhere and is protected by secure data encryption.

For more information, please contact us:

Sage 100: 1-888-721-8989 (U.S./Canada)

Sage 300: 1-888-878-7675 (Canada)

Sage 300: 1-888-336-4038 (U.S.)

Save costs and enjoy added value

Sage Inventory Advisor Basics is exclusively available to you at no extra cost with Sage 100c or Sage 300c business management solutions and as part of Sage Business Care Gold or Sage Business Care Platinum.

Sage Inventory Advisor Basics is part of the Sage Inventory Advisor product family.

If your company has complex inventory planning needs that include manufacturing or a centralized warehouse, you should consider Sage Inventory Advisor, the fully featured version.